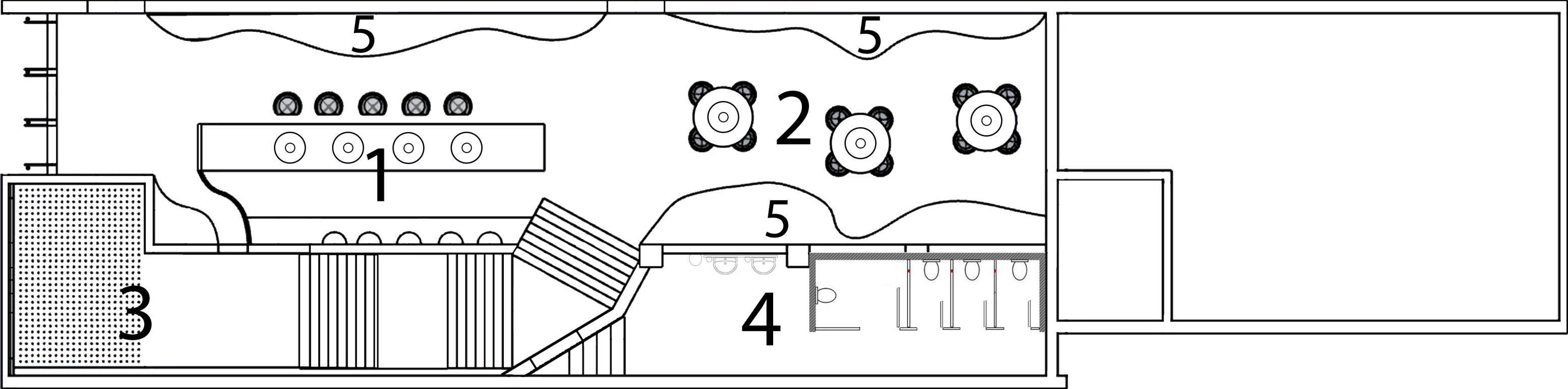


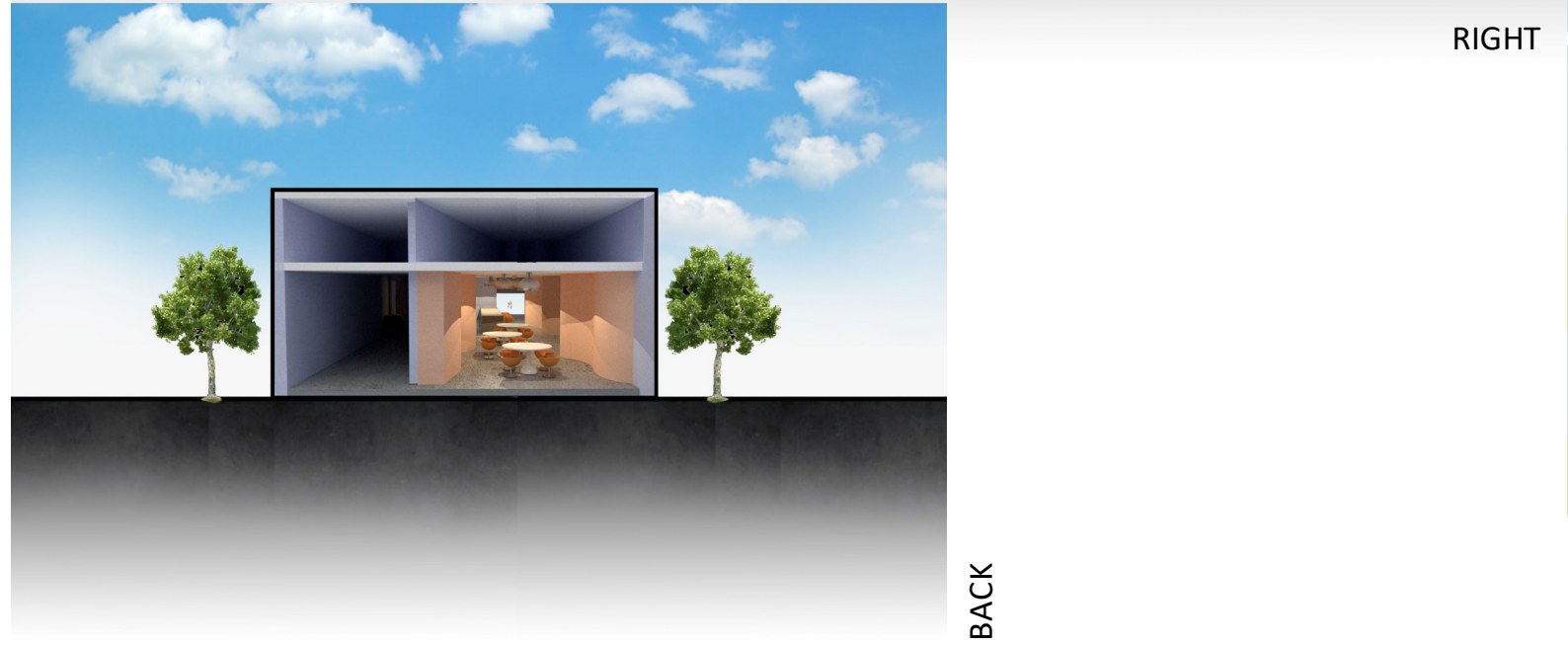
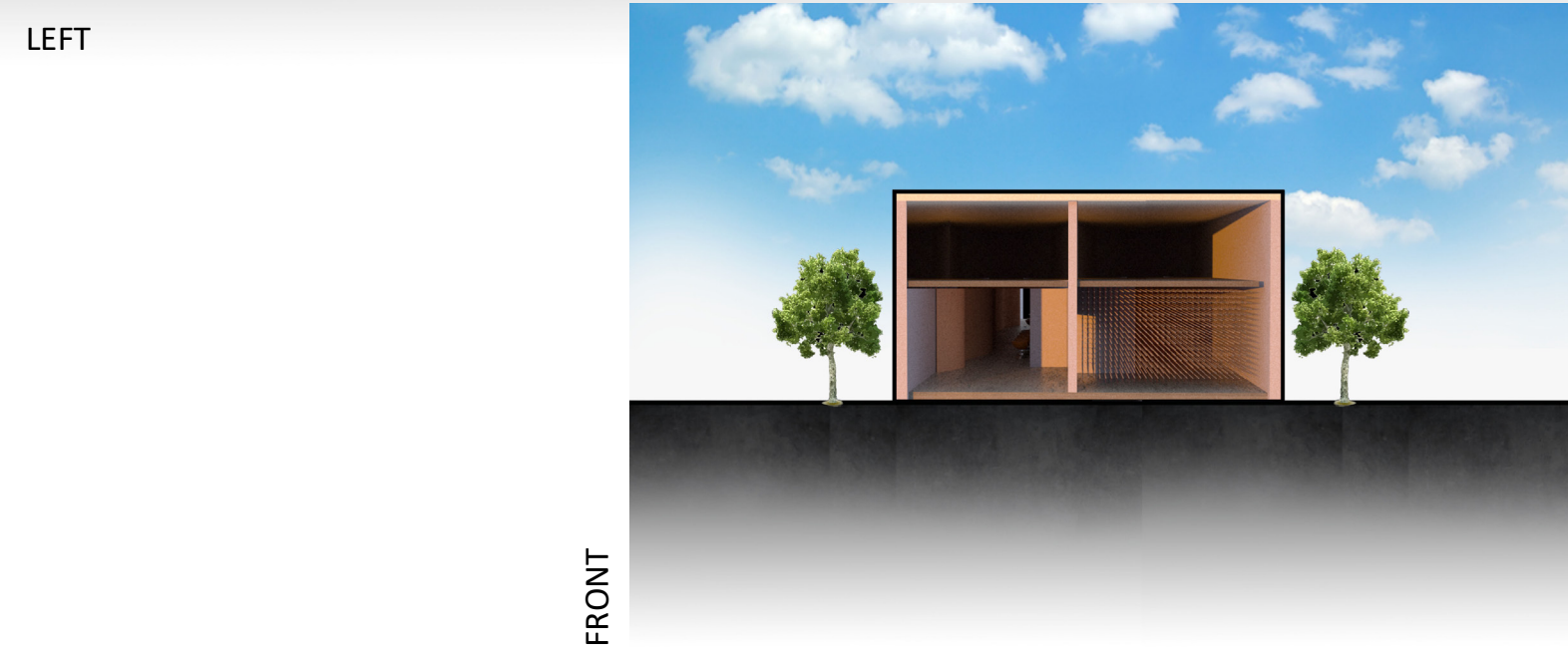
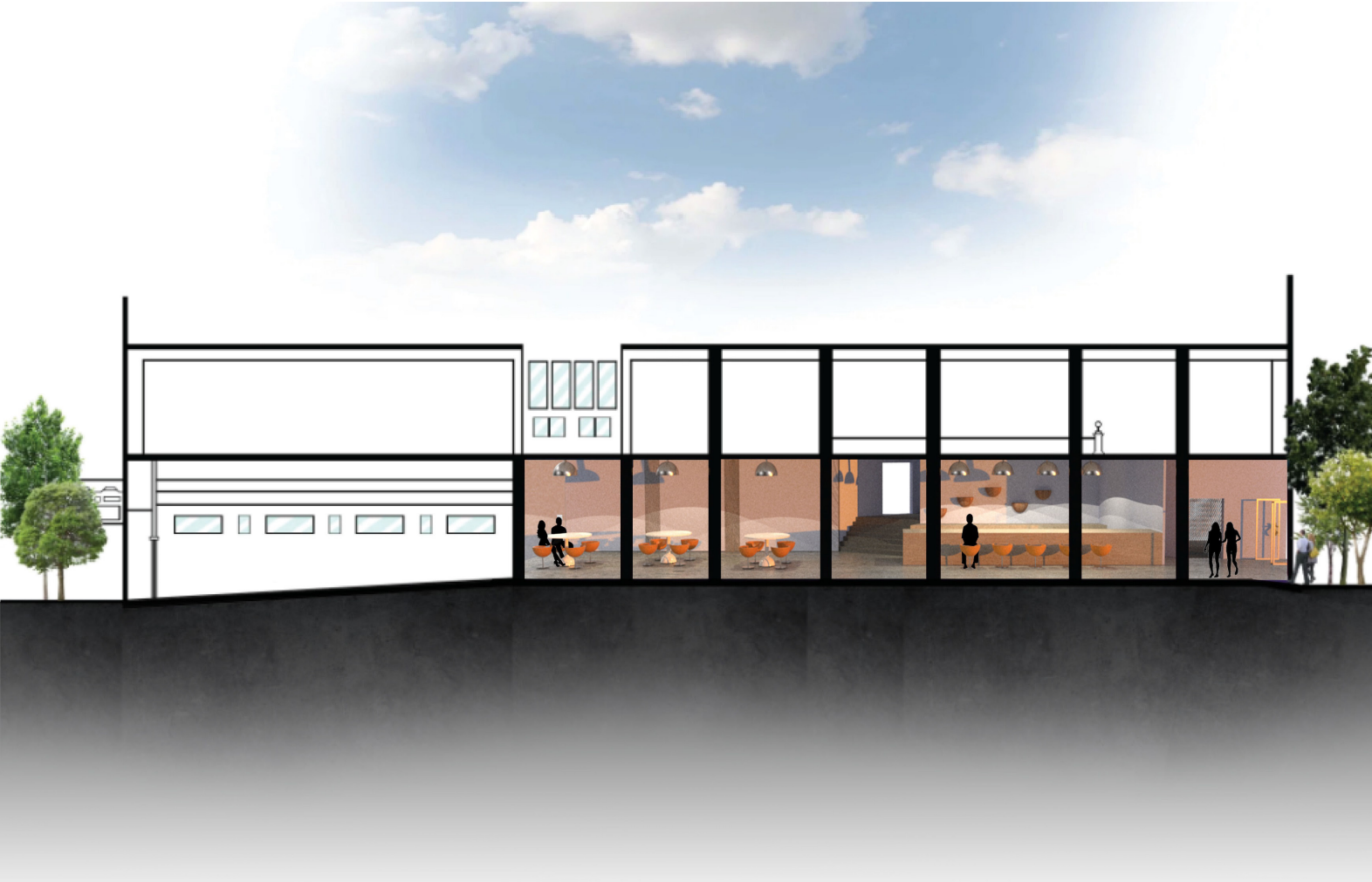
The background is a complex, abstract composition. It features a grid of small, dark, reflective spheres suspended by thin red lines. A central, star-like pattern is formed by a series of intersecting lines and spheres, creating a sense of depth and perspective. The overall color palette is dark, with highlights on the spheres and a warm, golden-brown glow in the center.

SPATIAL FABRICATION STUDIO 2020 SEMESTER I





- 1. BAR
- 2. SEATING AREA
- 3. SENSORY ROOM
- 4. RESTROOM
- 5. WALLS

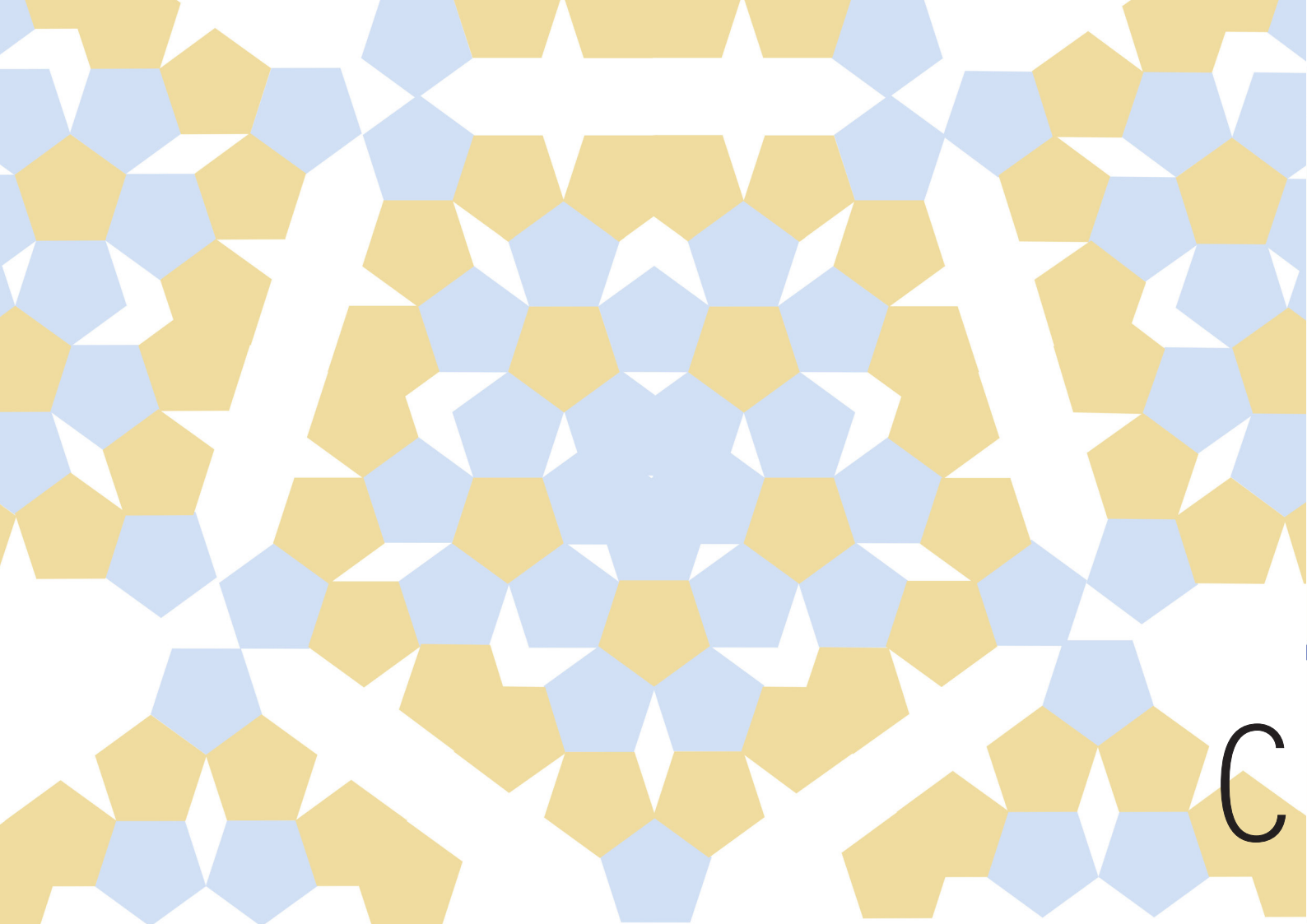
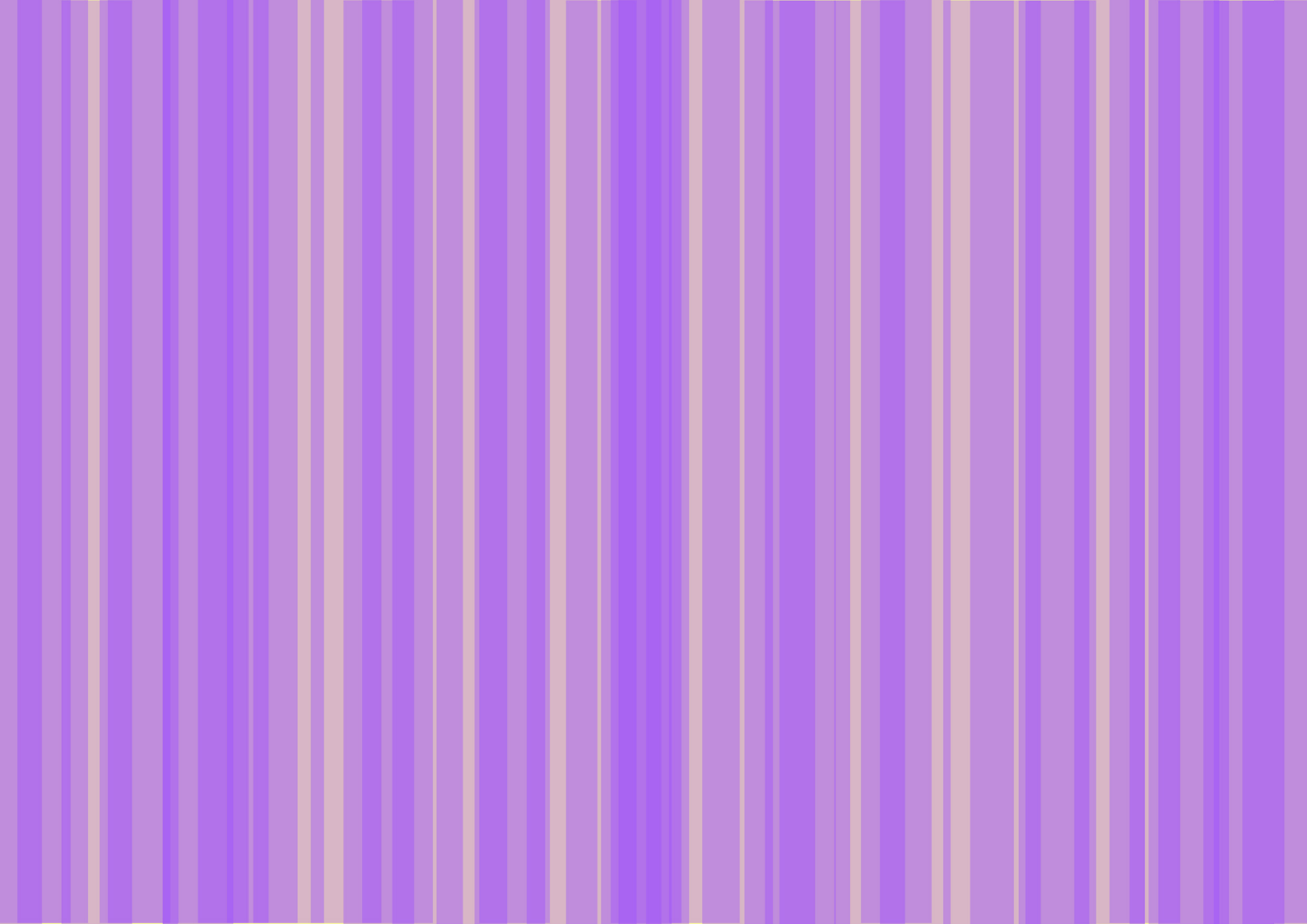
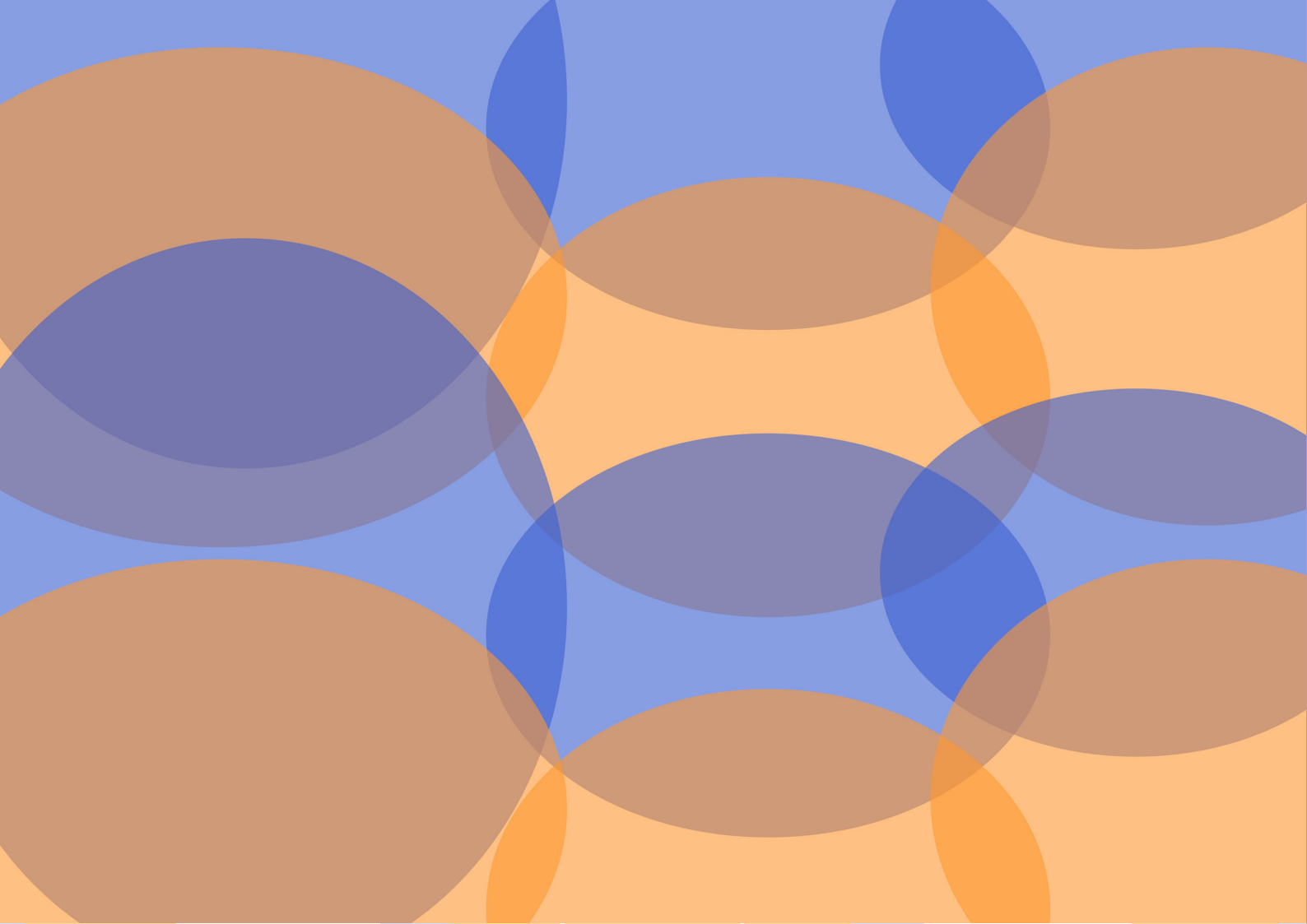


FRONT

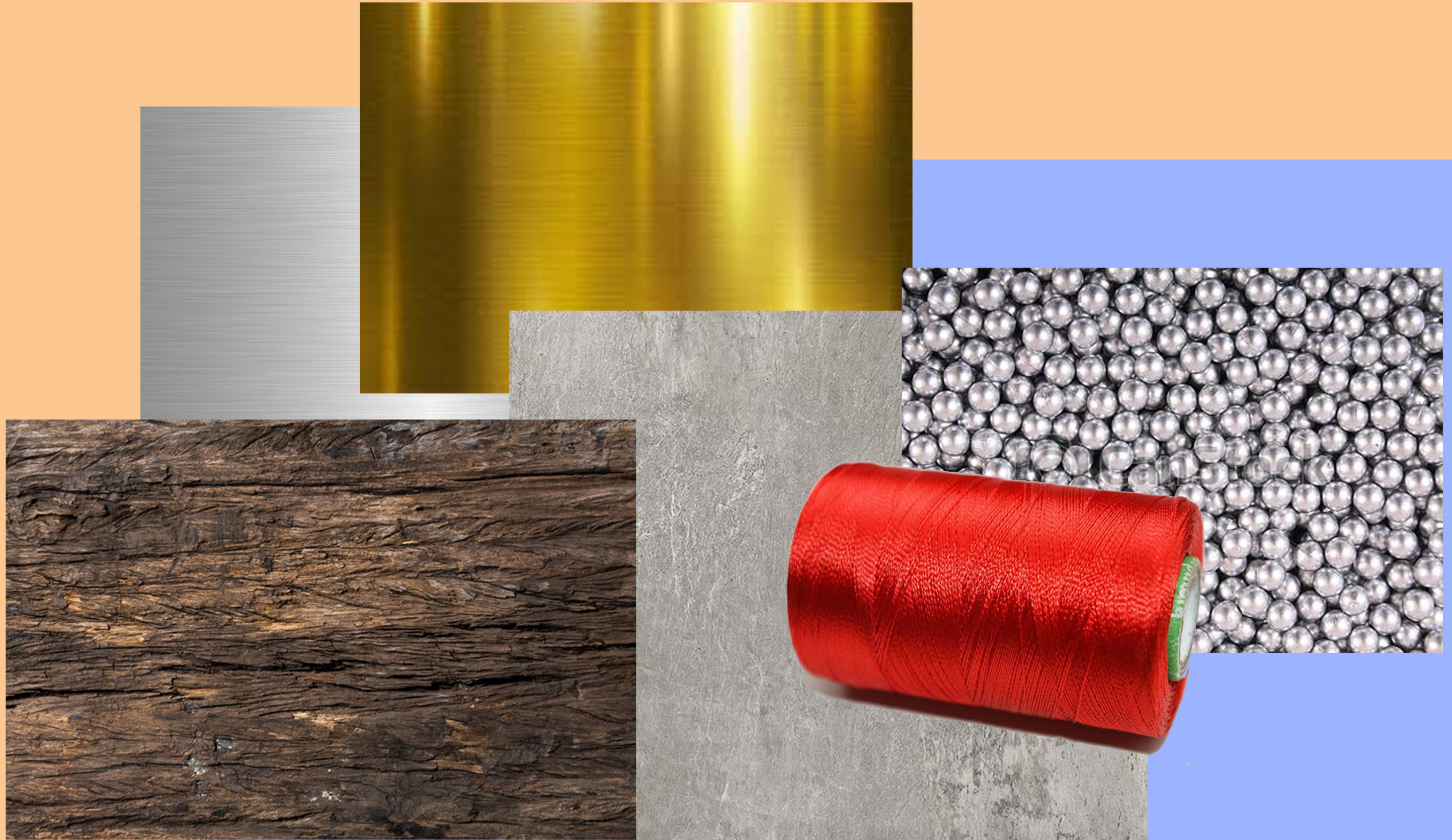
BACK

LEFT

RIGHT



COLOUR PALETTE



MATERIAL PALETTE







